



DULUX DONATES PAINT FOR ELEPHANT HOUSE. Dulux is painting the Taj Mahal – Wellington's version of it that is.

Wellington Zoo's Elephant House, designed and built in 1927 to evoke the Taj Mahal, is being given a spruce up, compliments of Dulux. The 100 Year Anniversary celebrations of the Zoo are planned for 26 October, and having the Elephant House look fabulous for the centenary was high on the priority list, says Beth Houston, Marketing Manager at the Zoo.

"Dulux's donation will do just that." Dulux donated 125 litres of paint and Pacific Painting Co were contracted to do the work. Dulux product used on the Elephant House is Weathershield X10 Gloss: Stowe White on the exterior, Cossack Rock for the trim and Wairau for the dome.

"The paint is enormously helpful to us at Wellington Zoo. The Elephant House is right at the heart of the Zoo. It's used as a meeting place, a space for celebrations or just to get out of the rain."

The most famous elephant to have lived at Wellington Zoo was Kamala, who arrived in 1953. She died in 1983, and since then, no elephant has taken up residence. The Elephant House has been used for many different purposes over the years – an art studio, exhibition and interactive display area.

It is now home to the scaly nursery, bats and a reptile and amphibian collection. The meerkats live in the old elephant bath, redesigned as a piece of African desert.

The elephant stand, once used as a stage, will be an integral part of the Centenary celebration.

WELCOME

On behalf of Dulux New Zealand, I would like to welcome all of our customers to the first issue of Surface. As the longest established paint manufacturer and marketer in New Zealand, we take great pride in our heritage and are committed to continuing our contribution to all industry participants. The tradition of this contribution spans our Trade customers, consumers, industry groups and the New Zealand community. Surface endeavours to share some of our more recent activity across the country.

At Dulux, we have a passion for inspiring people and we hope that this manifests itself in the form of innovative products, services and ideas that impacts anyone who comes into contact with our organisation. We look forward to progressing our engagement with you as we work together to grow our respective businesses and the exciting industry.

Greg Warren
General Manager, Dulux NZ

DULUX FEATURE COLOUR



215 Limehills

A gentle green that is bound to grow on you. Fertilise your scheme with Nuhaka and Rai Valley.

Colours selected from The Dulux New Zealand Colour Map®

JOB PROFILE – WELLINGTON FREE AMBULANCE BUILDING. The Free Ambulance Building in Cable Street Wellington, one of the city's finest examples of an art deco building, has recently undergone a major refurbishment and started a new incarnation as a café and bar (St Johns Heineken Hotel) with office space above.

The building is a heritage building, having national significance as being the first purpose built ambulance building in the country. It was designed by architect William Turnbull, who changed his plans for a brick building following the Napier earthquake. Instead, the ambulance building, which was officially opened by Mayor Charles Norwood in 1933, was constructed from reinforced concrete, having a clean and uncluttered appearance with decorative vertical lines of the classic art deco style.

After serving the purpose for which it was built for 60 years, the ambulance building closed in 1994 following plans by Lambton Harbour Management to redevelop the Wellington Waterfront. A heritage order was put in place to secure its future and it later operated as a bar, a theatre and a venue for special events.

In November 2005, Athfield Architects and L T McGuinness Construction joined forces to refurbish the building for Willis Bond & Co. Painting was done by Chris Geany using colours from the Dulux New Zealand Colour Map, which were approved by the Council in accordance with heritage requirements. Tenants began to move in in July 2006 and in mid September, the heritage building once again opened its doors to the public.

Architect: Thomas Turnbull (1933), Athfield Architects (2005)

Client: Willis Bond & Co/Wellington Waterfront Ltd

Contractor: L T McGuinness

Product used: Exterior – Dulux Acratex Acrasand texture, top coated with Dulux Acratex Acrashield (Opononi, Waitangi, Pauanui and Cossack Rock)



Mark Taylor explains the water clarity to Dulux National Trade Manager Andrew Gunn and Area Manager Karl Battersby.

PROMOTER WILL DRINK WASTE WATER HE'S TREATED. Contaminated wastewater frequently finds its way into stormwater and sewer systems and ends up in our rivers or harbours, but a new system that deals with water-based paint and plastering wastes delivers water so pristine and pure the promoter is prepared to drink it.

The portable system collects the water contaminated from washing out brushes, rollers or paint and plaster containers. Additives that work five times faster than other general water treatment chemicals can separate 160 litres of water from the solids in 20 minutes. The solids can be strained off and will dry into an inert lump that is safe to dump into landfills. In Australia, where the system was developed, the water has been tested and found to be clean enough to be disposed of on to land or directly into rivers or the sea. The system has been demonstrated to waste treatment authorities in Auckland, Wellington and Christchurch and a number of the systems have been given away for contractors to trial.

Developed by Enviro Solutions in Brisbane, the systems are being marketed to the paint industry exclusively through Dulux. They are portable and come in three basic sizes starting from 160 litres up to 800 litres. Mark Taylor from Enviro Solutions says the water quality after treatment is so pure that he's prepared to drink it. Every type of acrylic paint in New Zealand has been tested through the system and it is capable of handling wastewater from tilers, brickies and plasterers. It will also cope with turpentine or oil based paints if they are accidentally poured into the system.

Contact **Murray Gray** on **021 926 225** for further information or sales inquiries.



<< **DULUX
FEATURE COLOUR**

Dulux 174 Nuhaka

Dulux 190 Rai Valley

Dulux 215 Limehills



DULUX NEW ZEALAND IS PROUD TO BE A TEAM SUPPLIER OF EMIRATES TEAM NEW ZEALAND. Dulux has come on board as a Team Supplier of Emirates Team New Zealand. The sponsorship, for the duration of this America's Cup campaign, involves supplying paint for the team's Viaduct Basin base and any other requirements in Auckland and Valencia, Spain.

Emirates Team New Zealand has now taken delivery of its second new America's Cup yacht, with the arrival of NZL 92 at the Viaduct Harbour, Auckland, base. NZL 92 is now in the boatshed being prepared for launch later this month. Sea trials will follow before shipping to Valencia.

ETNZ director Grant Dalton said: "We have just over six months to perfect the boat and team package before the start of the Louis Vuitton challenger series (to determine which of the challengers will race Alinghi for America's Cup) in Valencia. There's no time now for second thoughts, no going back to the drawing board.

"The team has come a long way since June 2004 when we announced that the challenge would go ahead but there's still a lot of work to do by April 16 next year when the series starts.

"We intend to do exhaustive reliability trials on NZL 92 and 84 through November, then both yachts will be back on a Maersk containership by Christmas, bound for Valencia."

To check out the latest Emirates Team New Zealand news visit www.emiratesteamnz.com

DULUX PRODUCTS HAVE THE BIG TICK. Environmental Choice is a voluntary environmental labelling programme initiated and endorsed by the New Zealand Government. The licence to use this label recognises genuine efforts made by manufacturers to reduce the environmental impacts of their products, and provides a credible and independent guide for consumers who want to purchase products that are better for the community.

Our licence covers most of our premium water based paints, including Dulux Weathershield X10, Timbacryl and Roof, Dulux Aquanamel, Dulux Wash & Wear 101 Advanced, Dulux Mouldshield, Dulux AquaTread, Dulux Primercryl, as well as some Cabot's and Intergrain products.

Dulux NZ will continue to introduce the latest developments in environmentally friendly paint.



DULUX NAMING SPONSOR FOR BEST DESIGN AWARDS EXHIBITION 2006.

Dulux recognises the importance of quality, excellence and creativity in design, and we are delighted to be the naming sponsor of the Dulux BeST Awards Exhibition for 2006.

The Designers Institute of New Zealand (DINZ) has proudly held the BeST Design Awards since 1992. This awards programme has grown to become a significant part of the calendar year for DINZ, designers, their clients, tertiary institutes and their students.

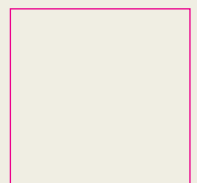
In 2005 the BeST Design Awards finalists were exhibited in Auckland, Wellington and Christchurch. This was a first for the awards programme and gained enormous support from the design industry. This year, the exhibition has expanded and will also be held in Dunedin.

Dulux is very excited to be associated with this event as it will allow the brand to build a stronger association with architects and designers. The exhibition has already been to Auckland and Wellington. It will be in Christchurch (Gallery Space) from 30 October to 5 November, and Dunedin (Otago Museum) from 18 November to 25 November.



Dulux staff at the BeST Design Awards Exhibition in Auckland. From left: Andrew Gunn, Grant Fraser, Gretchen Flynn, Greg Warren, Jude Melbourne, Neil Watkins

DULUX FEATURE COLOUR >>



DULUX FEATURE COLOUR



144 Ohakea

Classic forage cap serge.
Salute with Cascade Cove
or Godley Head.

Colours selected from The Dulux New Zealand Colour Map®

HABITAT FOR HUMANITY

Dulux has been a proud supporter of Habitat for Humanity since 1997, supplying paint for every house built. Habitat for Humanity is a non-profit, non-denominational Christian housing organisation that aims to eliminate poverty housing from the world and to make decent shelter a matter of conscience.

Since 1976, Habitat has built more than 200,000 houses in 100 countries, with a new house being completed every 24 minutes. Habitat for Humanity has housed more than one million people globally. In New Zealand, 276 families have been housed so far.

Three factors make Habitat houses affordable by low-income people world-wide:

- > Houses are sold at no profit with no interest charged on loans
- > Homeowners and volunteers work together to build the houses under trained supervision
- > Individuals, companies, churches, service clubs and others provide the materials or financial support.

If you are interested in making a donation or becoming a volunteer please see www.habitat.org.nz for more information.



Seven-year-old James helps with the painting (Dulux paint) in a safe environment away from the main building. All members of the family are encouraged to help with the construction of their Habitat for Humanity home.



JOB PROFILE – TE RAPA NEW WORLD. New World Te Rapa, the first of Foodstuffs (Auckland) Limited's new generation stores, has won two New Zealand Retail Interior Association (NZRIA) design awards.

The judges of the retail design awards said that where most supermarkets are white, sterile, unfriendly places focused on the shopping chore with little comfort, "New World Te Rapa seems to have broken this paradigm. The resulting exterior and interior treatment leads the category creating a warm inviting 100% food focused environment."

New World Te Rapa won the overall 'Nourishment Group' category and also came top of the 'Grocery and Convenience Stores' group within the same category. Rob Guild, Design Manager for Foodstuffs (Auckland) says these two awards are a great acknowledgement of the success of the design and layout of the store. "We already know our customers like it, but it's great to receive this industry recognition as well. We wanted to design a building that customers didn't feel claustrophobic in, something that links them with the outside world. The individualised design is also about differentiating ourselves from our competitors – getting away from the 'big box' type supermarket," he says.

New World Te Rapa has a large amount of glazing, wide windows and curving façade, part of Foodstuffs' desire to let customers see into and out of the store. "It's more community-based architecture than a 'cookie cutter' approach," says Rob. "We want our architecture to be an asset to the community: something intriguing, interesting and stimulating."

The 4000 square metre store, which opened in October 2005, has also won the NZIA Regional Award 2006 for the Waikato/Bay of Plenty region.



Architect: Jenson Chambers Young Ltd

Client: Foodstuffs (Auckland) Ltd

Shopfittings: Fletcher Construction

Dulux product used: Luxathane R (custom colour green/black) on steel, Arcashield Matt 355 on concrete panels, Intec (custom colour) on plywood ceiling panels, Aquanamel semi-gloss on doors and frames, Wash 'n' Wear 101 (Canvas Cloth) on plasterboard walls.

DULUX FEATURE COLOUR >>

Dulux 156 Cascade Cove

Dulux 153 Godley Head

Dulux 144 Ohakea

JOB PROFILE – THE JAILHOUSE. The Jailhouse has been accommodating people for over 130 years. It closed as a jail in 1999, having been used as a jail, a women’s prison and a military camp and now, after a major face-lift, it has become the place to stay in Christchurch if you are looking for accommodation in between backpackers and a motel.

Built in 1874, the Jailhouse, Christchurch’s first concrete building, is an important example of Gothic Revival architecture. The Christchurch Cathedral and Christ’s College are other examples of this style and it was the Cathedral’s designer, Benjamin Mountfort who oversaw the construction of the Jailhouse.

Owners Gary Parrett and Kirsty Henderson bought the building in January of this year. They had previously been café owners and thought the Jailhouse would be ‘an interesting project’.

Sixty centimetre thick concrete walls, many of them with up to 10 layers of paint, had to be stripped back in preparation for painting. With 1800 square metres and 37 rooms with all those layers, it was no small feat. “The result has exceeded all our expectations,” said Gary. “After painting, the building has come up like brand new.” The Dulux Primerlock worked brilliantly, he said. “We used tons of it and along with water blasting, it created the perfect foundation. It’s just a fantastic product.”

Primerlock was top coated with Wash ‘n’ Wear Semigloss – chosen for its easy care. Gary kept chips of the layers of paint, as he thought they were a good representation of years and years of trends and changes in decorating. “There’s a dingy brown, pastel pinks, greens and blues and a horrible yellow.”

Looking pristine and thoroughly modern, the Jailhouse opened its doors to its new residents on August 1. It offers a range of accommodation choices, catering for singles, couples, and groups. Perfect for sports teams, it has already accommodated the Australian Surf Lifesaving team, who have written to say they had a great stay and will be back next year!

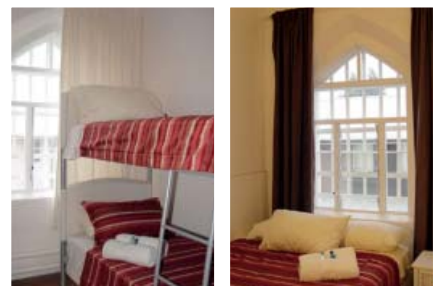
Painting Contractor: VDB Painting – Bob Vandenberg

Architect: Shepherd & Rout – David Shepherd

Product Used: Undercoat: Dulux Primerlock

Interior: Dulux Wash ‘n’ Wear – Semigloss

Exterior: Dulux Weathershield X10



CONTACT US Comments or feedback?

Email us at surface@dulux.co.nz

We’d love to hear from you.

The Dulux New Zealand Colour Map® Fandek - A journey through New Zealand and its homegrown colours. The Colour Map comprises colours that reflect the unique character of New Zealand’s most loved locations and cherished settings.



<< **DULUX**
FEATURE COLOUR

COMPETITION

Win a \$100 liquor voucher.

REDEEMABLE FROM A STORE NEAR YOU.

Just find the answer to the question in this issue of Surface, and email to surface@dulux.co.nz to go in the draw. Please enter “Competition” in the subject line. You must be over 18 years old to participate.

Q: What was the name of the last elephant at Wellington Zoo?

10-YEAR GUARANTEE ON DULUX ROOF AND TRIM. Dulux Weathershield Roof & Trim, a New Zealand favourite for many years, now comes with a 10-year guarantee!

After extensive tests for durability and corrosion resistance, we can confidently offer a 10-year guarantee against blistering, peeling and flaking, provided application has been in accordance with Dulux instructions.

Weathershield Roof & Trim is ideal for use on roofs including galvanised iron, Zinalume, Colorsteel, concrete tiles, gutters, tiles, timber fascias, plastic spouting and guttering, masonry and structural metals.

It comes in hundreds of colours, including colours matched to Colorsteel. No primer is required on most substrates and it is entirely safe for drinking water collection. It is Environmental Choice accredited.



MASTER PAINTERS GUARANTEE A WINNER. In February this year Dulux and Master Painters New Zealand formed a partnership to offer the Registered Master Painters 5 Year Guarantee. The partnership has been a big success, creating a 'point of difference' image for Master Painters and making it stand out from the crowd, says Chairman, Paul Reddish. "We've had lots of inquiries, people are seeing that we stand up for what we do, that we guarantee our work."

Mike O'Donnell, Marketing Manager for Dulux, agrees the partnership with Master Painters has been a resounding success. "From our point of view it has been about building relationships with our customers and strengthening the Master Painters brand. It has been successful for both parties – and it will be ongoing – it's a work in progress."

Master Painters New Zealand offers homeowners a 5-year workmanship guarantee up to a maximum value of \$15,000 when they engage a Master Painter and choose to use Dulux paint products premium line.

The 5-year guarantee does not negate or alter the protection offered to the homeowner under the Consumer Guarantees Act. The Consumer Guarantees Act sets out guarantees that goods and services must meet when sold by someone in trade – that is, a retailer or service person. But what happens if that service person is no longer in business or unwilling to co-operate in resolving any issues? With the Master Painters 5-Year Guarantee, consumers have the added safety net of being able to turn to a national body in seeking a resolution should problems arise.

With a 5-year guarantee on workmanship, clients can be confident that the investment they have made in their home is protected. For further information on Master Painters visit www.masterpainters.co.nz or phone **0800 PAINTNZ** (that's **0800 7246869**).



For further information on Dulux colours and products, please visit www.dulux.co.nz, call Dulux Customer Service on **0800 800 424**, or talk to your local Dulux representative.



Dulux is the only paint recommended by Master Painters New Zealand. To find a Registered Master Painter in your area visit www.masterpainters.co.nz



Dulux paint has been made in New Zealand for our unique conditions since 1939.



Colours shown are as close as possible to actual paint colours. Please note, due to the limitations of the printing process, printed colour and images may not always represent the true colour. Always confirm your choice with Dulux Colour Cards, Dulux Colour Chips, the Dulux NZ Colour Map® or Dulux Sample Pots. Dulux, Colour Map, Colour Perfection, Mycolour, Worth doing, worth Dulux are registered trademarks and the dog device is a trademark of Orica Australia Pty Ltd. The word Orica, the Ring Device and the Orica Mark are trademarks of Orica Group Companies. Dulux NZ, 150 HUTT PARK ROAD, LOWER HUTT, NEW ZEALAND