



A CUT ABOVE THE REST. The 2009 Master Painter of the Year was announced at the Gala dinner proudly sponsored by Dulux. Held in New Plymouth the black tie event was attended by over 100 people including some of the top painting professionals in the industry from around the country.

The entries for the inaugural awards were of a very high standard, a great reflection on the membership of the association. Judges said the workmanship of the entries was so good that it was hard to select clear winners.

Murray Gray of Dulux was one of the Judges for the practical elements of the awards; "The level of workmanship was very impressive, I found this made the judging process more difficult, but it was a credit to all the contractors who entered and the association".

Taking out three of the top awards was Wall Treats Ltd, winning the Best Master Painter Member Website Award, Best Rework Residential Interior Award and the overall Master Painter of the Year Award.

Master Painters New Zealand Chief Executive Brian Miller said award judges described Wall Treats work as "the highest quality, showing particular attention to detail in all areas".

"This small business presents both itself and the association very well by being meticulous in all areas from documentation to finished work."

"By having more than one entry up for judging it showed that this contractor had consistent standards of the highest order. They have laid down a challenge for others to follow," the judges said.

Dulux and Master Painters first partnered together in 2006 to establish the Master Painter 5 year workmanship guarantee. Since then Dulux has been the principal sponsor of the organisation, working with the New Zealand Master Painters to raise their profile.

www.masterpainters.co.nz



Operations Manager Ashley Wong and co-owner Daniel Zapata of Wall Treats Ltd at the 2009 Master Painter Awards.

www.walltreats.co.nz



DULUX FEATURE COLOUR



Red Jacks

Bristling whiskers on a gold digging founder.



DULUX STRIKES GOLD AGAIN.

For the second year running Dulux has been recognised at the Wellington Gold Awards for business excellence.

Following from last years Green Gold Award for environmental excellence, this years awards saw Dulux win the Workplace Safety Award.



The ACC Workplace Safety Award was presented to the Dulux team at an awards ceremony attended by more than 800 people in Wellington's TSB Arena on the 14th of May 2009.

Dulux General Manager Patrick Jones says the latest win was a fantastic achievement for the Dulux team and recognised a great deal of hard work.

"All our staff, led by our operations team, have been involved in maintaining workplace safety. A key part of that is a thriving behavioural safety programme, which has been instrumental in removing many barriers to safety.

We are all proud to be recognised as leaders in workplace safety."

Dulux has been manufacturing paint in New Zealand at its Gracefield site in Lower Hutt for 70 years.



GRAND DESIGN. The new Wellington Regional Hospital opened its doors for patients in March of 2009.

The purpose built state of the art medical facility has been designed by CCM Architects in association with Australian based architects and health planners.

"A holistic approach throughout the design process was used to improve operational efficiencies, and to provide both emotional and physical accessibility," said John Rogers, director of CCM Architects.

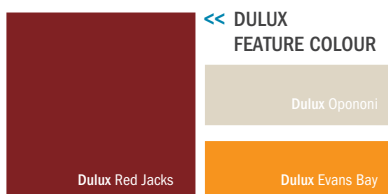


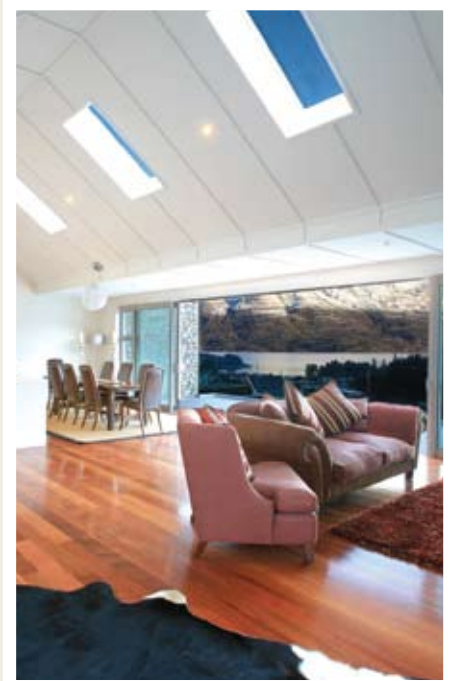
The building has seven stories and the form of the building is deliberately broken up to respect the forms and textures of the local urban context. The exterior was completed in pre-finished materials; a distinctive terracotta tiling was used around the two podium levels and the tower has powder coated aluminium panelling with light colours, all helping the building to blend into its local surrounds.

The hospital has a central two-storey atrium and this contains the reception and direct access to lifts and all the wards. Off this atrium is a landscaped courtyard that contains the relocated historic concrete arches and steps that defined the entry to the original hospital.

Painting contractor Paul Reddish Decorators carried out the painting on the entire building, extensively using Dulux products on the podium levels. As part of their environmental best practices they utilised an off site Dulux EnviroWash unit to safely collect and treat painting tool wash up.

Architect	CCM Architects	Products	Dulux Wash & Wear 101 Dulux Aquaname! Dulux Professional ASU Dulux EnviroSolutions EnviroWash
Construction	Fletcher Construction		
Painting Contractor	Paul Reddish Decorators Ltd		
Dulux	Peter Cording Key Account Representative 021 926 232		





CATALINA APARTMENTS. New to luxury accommodation available in Queenstown are the contemporary Catalina apartments. Apartments offer visitors the very best in accommodation with an enviable location only a few minutes walk from the town centre.

Mike Due of CBC Construction who carried out the construction work said, "This was one of the most difficult sites we've faced so far, due to silt layers in the surrounding hills. Before the project could really begin a retaining wall with 30m deep concrete piles had to be built in a terrain with a slope of 45 degrees."

Inside Out Painting and Decorating were chosen to carry out the paint contracting for their reputation for quality workmanship and experience in high-end projects. Danny Montgomery of Inside Out Painting and Decorating said, "we insisted on using Dulux products on this project, not only are they backed by the Master Painters but we know that the products will perform."

Dulux Wash & Wear 101 was used throughout the interior to provide an elegant finish that's hard wearing. Wet areas, such as bathrooms and kitchens were finished in Dulux Aquanamel to protect against water ingress.

Workmanship on this project secured Inside Out Painting and Decorating as finalists at the 2009 Master Painter of the Year awards, for the Best Commercial Wall coverings, Best Interior Commercial and Best Exterior Commercial awards.

The exterior of the project was finished in Dulux Weathershield and Dulux AcraTex Acrashield Tuscany Course over tilt slab. The result was an exceptional building that blends well with the surrounding natural landscape.

Architect Design Edge
Construction CBC Construction
Painting Contractor Inside Out Painting and Decorating
Plasterer Classic Finishes
Dulux Glen McNicholl
 Key Account Representative
 021 926 221
 Janet Lang
 Trade/Specification Representative
 021 926 159
Products Dulux Weathershield
 Dulux Wash & Wear 101
 Dulux Aquanamel
 Dulux AcraTex Acrashield

DULUX
 FEATURE COLOUR >>





SUSTAINABLE COMMERCIAL DESIGN. Highbrook in East Tamaki, Auckland is one of the city's most recent and innovative commercial developments.

Peddle Thorp Architects were the design force behind two commercial buildings located in the business precinct. Each building consists of three floors with a total floor area of 4300sqm per building. Ford has taken the main lease on one of the new buildings as their new national corporate office.

Designed with environmental sustainability in mind, both buildings completed at Highbrook were guided by the New Zealand Green Building Council's (NZGBC) Green Star Design Tool, with an objective of a 4-Star rating.

The design brief was to specify products carrying Environmental Choice New Zealand (ECNZ) accreditation where possible. Paint selection for the interior fit out was Dulux Enviro₂, which carries ECNZ accreditation. Dulux Enviro₂ also meets criteria set out in NZGBC Green Star rating tools, under core credits for indoor environmental quality.

Cabot's Door & Window Finish was also used throughout the fit out to achieve special tints and custom stains for the desired look.

Architect	Peddle Thorp Architects
Developer	Goodman+
Construction	Watts & Hughes Construction
Painting Contractor	D Allan Decorators
Dulux	Kieran Nally – Project Services Manager – 021 926 216
Products	Dulux Enviro ₂ Cabot's Door & Window Finish



HAMILTON'S WATERWORLD GETS AN UPGRADE. Hamilton's Waterworld has been upgraded in line with the Hamilton City Council's maintenance and upgrade objectives. The Council recognises that as a landlocked city, Hamilton's swimming facilities fill a critical role in providing water-based activities and education to both residents and visitors.

Eddy De Ruyter of Dulux worked with the architect and painting contractor to provide paint specifications that had to meet the demanding requirements of high use and wet areas.

Premium Dulux Weathershield products were used on the exterior of the building to revitalise and protect the exterior walls, roof, fences and facias. Dulux Aquanamel was used as a durable waterbased enamel finish on doors and windows that are prone to moisture collection in an aquatic environment. Handrails and stair areas experiencing high traffic were coated in Dulux Weathermax HBR for a durable finish.

Throughout the upgrade project the Council conducted all maintenance work under an externally managed quality control process. Dulux assisted by conducting onsite film build testing to ensure that paint finishes met specifications.

Architect	MSM Architects
Painting Contractor	GMR Holmac Hamilton
Dulux	Eddy De Ruyter Trade & Architectural Representative 021 926 191
Products	Dulux Weathershield Dulux Aquanamel Dulux Weathermax HBR



A MILKY GLACIAL RUN-OFF. Situated in a beautiful location next to Lake Tekapo, the Bluewater Resort has amazing views of the glacial feed lake and nearby Aoraki Mount Cook National Park. Because of the beautiful natural landscape it's not surprising this resort was developed with sustainability in mind.

The interior of the development was completed in Dulux Enviro₂. This paint specification was in line with the overall environmental focus of the development. By using Dulux Enviro₂, air quality was improved providing a healthier work environment that was ready for visitor occupation soon after work was completed.

Head contractor Arrow International was so impressed by Dulux EnviroWash units that they have purchased four units, for contractor use on project construction sites.

"We see it as our responsibility to minimise our impact on the environment, Dulux provide a great product that our contractors can use to manage paint wash-up" said Paul Terry of Arrow International.

Architect	MAP Architecture
Interior Design	Rubix Design
Head Contractor	Arrow International
Dulux	Karl Battersby Area Manger Christchurch 021 926 204 Brent Cooley Trade Sales Representative 021 926 173 Grace Calder Commercial Sales Representative 021 926 158
Products	Dulux Enviro ₂ Dulux EnviroSolutions EnviroWash
Colours	Dulux Lake Tekapo



WASH-UP WITH ENVIROWASH.

The Dulux EnviroSolutions EnviroWash units provide painting contractors a valuable work station for the collection and treatment of their brush & roller paint wash-up water.

The units come in three different sizes, 160L that are portable and ideal for use at multiple smaller sites, 400L for medium to large and more established projects, as well as 800L for heavy use by multiple contractors.

The size selection means there is an EnviroSolutions EnviroWash for every project.

The system is so easy to use that it can provide an environmental best practice for all painting contract work undertaken.

The units are connected to a water supply to deliver water pressure to the wash bay for tool wash-up. Wash-up is collected in a main holding tank, EnviroSolutions additives are then added to the collected water, so that paint solids separate from the liquid. Once separated water is filtered and drained through a release valve, leaving solid waste that when dried can be safely disposed of.

For more information on Dulux EnviroSolutions EnviroWash contact Murray Gray on 021 926 225.

DULUX FEATURE COLOUR



Martinborough
Grapes and Olives.

HISTORIC RESTORATION ON QUEEN STREET.

Heritage features well over 100 years old, have been given a new lease of life following the interior and exterior renovation of the Imperial Building at 56 Queen Street. The face-lift has attracted such notable retailers as Gucci and Louis Vuitton, who now inhabit the Ground Floor retail spaces.

Parts of the interior linings have been stripped back to expose the original brickwork, existing timber floors sanded and polished, with ornate ceilings undergoing limited revival. Feature walls to lift lobbies, hallways and common areas have been finished using Dulux Wash & Wear tinted in various Dulux Colours of New Zealand™ colours.

The entry Ground Floor common areas have been treated in a way to reflect the character of the existing historic building using colours Dulux Haast Half and Dulux Mt Eden. The above lift lobbies incorporate such signature colours as Dulux Gluepot, Dulux Kopu, Dulux Whakarewarewa and Dulux Hahei.

All steelwork (where exposed) has been painted in Dulux Whakarewarewa, with adjacent walls to the signature colours painted in Dulux Marton and Dulux Mt Eden.

Architect Moller Architects

Project Team Gordon Moller/Craig Moller/
Jonathan Gibb

Contractor Savory Construction Ltd.

Painting Contractor(s)

TBS Fleming Painters (exterior)
Wayne Bowden Painters (interior)

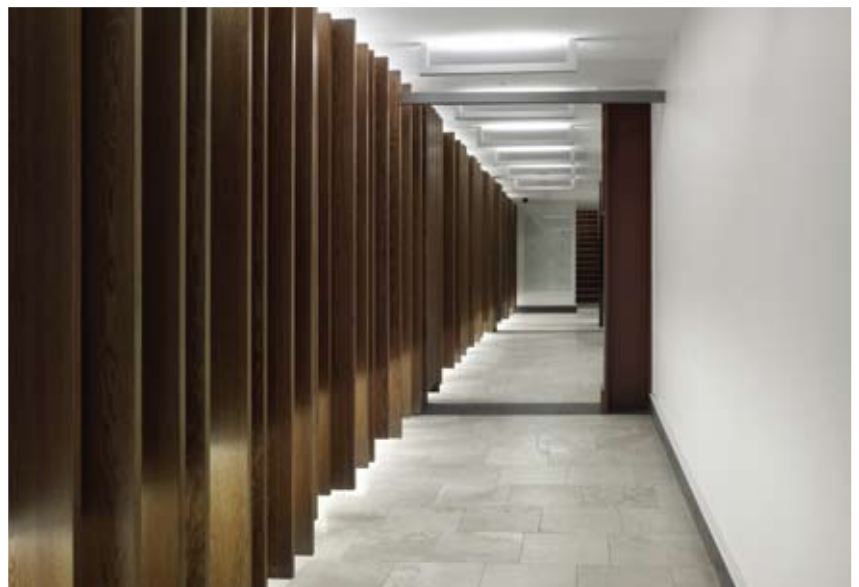
Client AMP Investments

Dulux Kieran Nally
Project Services Manager
Northern Region
021 926 216

Product Dulux Wash & Wear 101,
Dulux Super Satin

Interior Colours

Dulux Haast Half
Dulux Mt Eden
Dulux Gluepot
Dulux Kopu
Dulux Whakarewarewa
Dulux Hahei
Dulux Marton



DULUX
FEATURE COLOUR



Dulux Hoon Hay Half

Dulux Mangaweka

Dulux Martinborough

COMPETITION

In this issue we are giving away a fantastic iPod nano, 8GB, in your choice of 8 stylish colours to match your personality.

Just find the answer to the following question in this issue of Dulux Surface, and email it to surface@dulux.co.nz to go in the draw to win. Please enter "competition" in the subject line. Entries close 3 July 2009.

Q: Name the two awards that Dulux has won at the Wellington Gold Awards over the past two years.

Congratulations to last issue's winners of the Canon Powershot bundle, Karen Bowker of AJ Bowker Painter and Decorator.

CONTACT US Comments or feedback?
Email us at surface@dulux.co.nz
We'd love to hear from you.

<< DULUX
FEATURE COLOUR



BONE MARROW CANCER TRUST DEVELOPMENT. The Bone Marrow Cancer Trust has brought the organisation closer to its aim of keeping families together with the expansion of their accommodation facilities in Christchurch.

The expansion will enable 26 families to live close to their loved ones and assist in the treatment and recovery from Bone Marrow Cancer. Facilities have undergone a two-stage development, the repaint of the existing Ranui House facility, as well as the development of the second new Accommodation House facility.

Designed by Trengrove & Blunt Architects Ltd the new Accommodation House consists of five floors above the ground floor providing an additional 18 units. All units, including the studios, have separate bedrooms, laundries, bathrooms and lounges, breath taking views of the surrounding area of the City, Avon River and Hagley Park.

Karl Battersby from Dulux worked with the painting contractors on both projects to ensure that paint applied was in line with the architect's specifications. The Dulux Specification Management Programme provided assurance that paint specifications are adhered to.

Dulux AcraTex Acrashield was applied to the exterior of Accommodation House, achieving a fine roll on texture profile using high build acrylic paint. Dulux Weathershield was applied to the exterior of Ranui House, this revitalised the existing coating and matched the colour of the new development.

Architect	Trengrove & Blunt Architects Ltd	Products	Dulux Wash & Wear 101 Dulux Weathershield
Construction	A W Construction		Dulux Aquaname1 Dulux AcraTex Acrashield
Painting Contractors	Brown & Syme Holdings – Accommodation House		Exterior Colours Dulux Waitangi Dulux Titirangi
	Dixon & Dixon – Ranui House – Repaint		Interior Colours Dulux Marton Dulux Oreti Dulux Pukaki
Dulux	Karl Battersby Area Manager Christchurch 021 926 204		



A GREEN HOUSE. Two homes in the Auckland suburb of St Heliers have been constructed in an effort to show how green building practices and design can be incorporated into everyday building processes.

Locally owned and operated NZ Built was behind the project that involved sourcing locally produced environmental materials to use in two cleverly designed homes. Both homes make use of insightful environmental design that will reduce consumption of resources over their lifetime.

Managing director of NZ Built Paul Belcher said, “we wanted to cut down on the carbon footprint by selecting locally produced materials from manufacturers who are taking up the green challenge”. Dulux Enviro₂ was used throughout the interior of both homes.

NZ Built found that many individual initiatives had been taken in the industry towards sustainable building but there were few cases where a holistic approach had been taken. They used this opportunity to develop their own holistic sustainable approach, to show the industry how green building can be achieved.

Builder NZ Built Ltd
Painting Contractor MTS Property Services
Dulux Gary Janmaat
 Specification Services
 021 933 219
Product Dulux Enviro₂



For further information on Dulux colours and products, please visit www.dulux.co.nz, call Dulux Customer Service on 0800 800 424, or talk to your local Dulux representative.



Dulux is proud to be a member of the New Zealand Green Building Council and is dedicated to developing environmentally sustainable products.



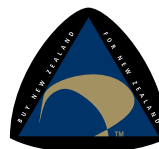
Sustainable Business of the year 2007 (Central Region)



To find a Registered Master Painter in your area visit www.masterpainters.co.nz



An extensive range of Dulux products have the tick of approval from Environmental Choice.



Dulux paint has been made in New Zealand for our unique conditions since 1939.



Colours shown are as close as possible to actual paint colours. Please note, due to the limitations of the printing process, printed colour and images may not always represent the true colour. Always confirm your choice with Dulux Sample Pots. Dulux, Worth doing, worth Dulux are registered trademarks. Dulux NZ, 150 HUTT PARK ROAD, LOWER HUTT, New Zealand.