



**CONTEMPORARY COLOUR FOR A BRAVE NEW WORLD.** In Mt Wellington an innovative IT company is using Dulux colour as a bold statement of corporate intent.

When Express Data moved to new premises earlier this year, it was an opportunity to create a workspace that suited the culture of their company. They needed a flexible interior that could accommodate a growing team and a mix of formal and informal meetings. They also wanted something extra that made them stand out from the crowd – and Dulux colour provided that.

Craig Grant of mga innovation was part of the design team behind the interior.

“The design is based around a central café space that brings staff together and also doubles as an informal meeting space for clients. The colour panels were initially an idea to integrate the various spaces together” said Craig.

The colour panel concept was a radical idea, but Express Data were bowled over by the vivid colour scheme and how it gave life to their company vision.

The panels began with the company’s brand palette of teal and orange, and then extended the story by adding colours from the Dulux Specifier Range including Ocean Trip, Gold Deposit and Blue Tulip to contrast and compliment them.

The panel walls are used to form a backdrop to a number of informal meeting spaces and flexible work areas. These surround the café and are the focal point of the buildings interior spaces.

Craig Grant says the result is a resounding success.

“We started with a great architectural space – a double height atrium. But now this interior is totally about colour and the buzz it brings to the business.”

Photo supplied by Think Photography | [www.thinkphotography.co.nz](http://www.thinkphotography.co.nz)

Architect mga innovation

Dulux Gretchen Flynn  
Design / Architectural  
Representative  
Northern Region  
021 926 233

Interior colours Dulux Ocean Trip  
Dulux Marahau  
Dulux Murdoch  
Dulux Gold Deposit  
Dulux Evans Bay  
Dulux Befitting  
Dulux Woodend  
Dulux Blue Tulip  
Dulux American Mahogany

## DULUX FEATURE COLOUR



Lake Hauroko  
Bottomless Blue



### LET YOUR COLOURS SHINE ON THE INTERNATIONAL STAGE

The Dulux Colour Awards have long been a bastion for acknowledging and applauding exceptional colour application and use amongst Australian architects and interior designers. For the first time we are pleased to announce that the 24th Dulux Colour Awards will now include entries from design professionals practicing in New Zealand.

Several categories are available including Grand Prix, Commercial Interior, Commercial Exterior, Residential Interior, Residential Exterior, Sustainable Interior, Professional Enviro<sub>2</sub> and Students Years 1 – 6. Finalists from New Zealand\* will be whisked to the award ceremony in Melbourne courtesy of Dulux New Zealand. In addition to pride and prestige of joining some of the worlds best designers, winners of each category will receive a cash prize and trophy. The winner of the Grand Prix award will receive a fantastic prize of return airfares and five nights accommodation to attend 100% Design Toyko.

Expressions of interest in the 2010 Dulux Colour Awards are available online via [www.dulux.com.au/colourawards](http://www.dulux.com.au/colourawards), with submissions due by Friday 19th February 2010. Register now for more information on how to showcase your talent and creativity on the international stage.

\*up to a maximum of 10 finalists



**THE BEST WORKSITE VIEW IN NEW ZEALAND.** The Empress Hut on Mount Cook Aoraki at 2530m is the highest DOC hut in New Zealand, the last stop before pushing for the summit of our highest mountain. A volunteer crew faced unique challenges whilst repainting this hut with donated Dulux paint.

The original Empress Hut built in 1953 was used several times by Sir Edmund Hilary but was replaced in 1994. The original Empress Hut now sits at the base of the mountain with the new hut in view and forms part of the exit of the Mount Cook Aoraki Visitors Centre.

Due to severe paint delamination the Empress Hut was barely visible from the rejuvenated Visitors Centre so to add the final jewel in the crown, Martin Connell from Arrow International coordinated a volunteer project to expedite a repaint of the hut. Dulux paint was used for the Visitors Centre but “the job just did not seem quite complete with limited visibility of the Empress Hut from the Visitors Centre” says Karl Battersby of Dulux. When approached to donate paint Karl says “we were very excited to be involved with such an iconic structure and it was an honour to be able to support DOC to rejuvenate this important building”.

The remote nature of the location posed some unique challenges including helicopter flights in and cantilevered scaffolding 200m above a glacier. DOC staff were on site overseeing all safety elements of the project and painted alongside the volunteer team from Arrow International and P&W Painters. Time was of the essence with a weather system closing in and short working days. “We could only paint from 10am – 2pm when the temperature was warm enough for the paint to dry” says Martin. Despite the challenges Martin says “with views of the West Coast right down the Southern Alps through to Mt Aspiring this was a once in a lifetime experience. The average person can’t get access to the hut because you have to be a very good climber so I feel very privileged to have had the opportunity to get up there”.

<b>Contractor</b>	Arrow International	<b>Dulux</b>	Karl Battersby National Project Services Manager 021 926 204
<b>Painting Contractor</b>	P&W Painters	<b>Products</b>	Dulux Weathershield Roof & Trim
<b>Client</b>	Department of Conservation	<b>Exterior colour</b>	Dulux Coloursteel™ Pioneer Red

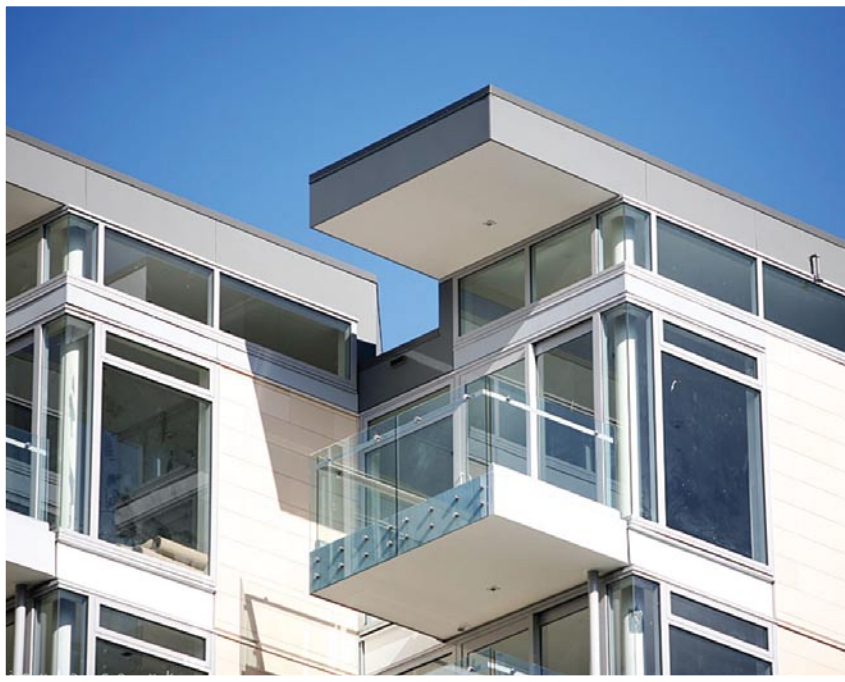


#### << DULUX FEATURE COLOUR

Dulux Murchison

Dulux Cardrona Double

Dulux Lake Hauroko



**NEW STYLE ICON IN THE CAPITAL.** A new apartment complex in the heart of Wellington’s vibrant new waterfront precinct has used unconventional design ideas to make the most of a prime site.

The Piermont building occupies one of Wellington’s premium positions across the road from Te Papa and Waitangi Park, with stunning views of Wellington harbour. Architect Allan Wright from Architecture + led the design team responsible for the 10 level, 69-unit apartment complex. He said there were several design ideas that made the project memorable.

“The building is on a unique site facing the park. So we angled all the apartments’ balconies to make the most of the view. Internally, we designed the space around three separate life towers to reduce the need for feeder corridors. It means there are more private internal spaces for the occupants,” Allan said.

JMA Decorators used Dulux products extensively in the common areas and in the apartments.

Dulux Wash & Wear in Dulux Tuporoa and Dulux Foveaux were used throughout the common spaces to provide a hard wearing and easily wipeable, elegant finish. All woodwork used Dulux Aquanamel Semi Gloss, a water-based enamel giving a durable finish.

Project developers Stratum Management offered owners a choice of four apartment colour schemes from the Dulux Colours of New Zealand™ range with broad, but contemporary appeal in mind. Dulux Enviro<sub>2</sub> low sheen was used on the walls for its low odour and low VOC properties. Dulux Mouldshield is guaranteed against mould for seven years so was used in wet areas such as bathrooms and kitchens.

The end result of the Piermont project result is a dynamic architectural package that looks set to be a style-setter in the capital for many years to come.

Architect	Architecture +
Project Manager	Stratum Management
Painting contractor	JMA Decorators
Dulux	Yvette Collins Commercial Sales Representative Central Region 021 926 174
Products	Dulux Enviro <sub>2</sub> Dulux Aquanamel Semi Gloss Dulux Professional Ultrahide Tintable Ceiling Flat
Exterior Cladding	Terracade by Austral Bricks
Interior Colours	Dulux Tuporoa Dulux Foveaux

DULUX  
FEATURE COLOUR >>



Dulux Matapouri



**THE PACIFIC SPARKLES LIKE A SAPPHIRE.** With a crystalline shape and blue glass exterior this contemporary building is truly a jewel in Mount Maunganui's 'golden triangle'.

Given the brief of creating 'the feeling of a home at the beach, but incorporating low maintenance, larger than average spaces and every modern convenience' Kerry Avery designed The Pacific. Located in the heart of Mt Maunganui with only a few seconds walk to the surf beach on one side and the serene harbour on the other, leveraging the views and creating good indoor/outdoor flow was imperative. The crystalline building shape, floor to ceiling glass on exterior walls and cleverly designed large decks allowed Kerry to maximise views and give good natural light into all apartments.

From the cool, ocean inspired blue exterior we move into deeper, richer tones in the public spaces. But walk into any one of the 68 apartments on this 11 story complex and you'll be greeted with a feeling of warmth and light. Two colour palettes of warm natural tones were developed to accommodate both permanent residents and serviced apartment clientele.

This new Mount Maunganui icon was developed in a time of recession signified by a stagnant construction market. Dave Gamlen from Watts & Hughes says that this project bucked the trend and "kept a lot of people employed, boosting spirits" making this project shine even brighter.



**Architect** Avery Team Architecture

**Painting Contractor** GMR Holmac Ltd  
(Tauranga)

**Contractor** Watts & Hughes Waikato  
Bay of Plenty Ltd

**Dulux** Mark Fraider  
Architectural Sales  
Representative  
Bay of Plenty  
021 926 215

**Products**

Dulux Wash & Wear  
Dulux Super Satin  
Dulux Professional Ultrahide  
Tintable Ceiling Flat  
Dulux Aquanamel Low Sheen

**Interior Colours**

Dulux Oreti  
Dulux Haast Double  
Dulux Wairakei  
Dulux Laingholm  
Dulux North Head  
Dulux Lindis Pass  
Dulux Pupu Springs  
Dulux Stoney River



## DULUX INVESTS ALMOST \$30 MILLION IN LOCAL MANUFACTURING

As a long standing Kiwi paint maker we have confirmed our commitment to manufacturing in New Zealand announcing a \$28 million investment in our Hutt Valley-based operation.

Dulux – which has been manufacturing at the site since 1939 – is starting a major construction project to expand our water-based manufacture and to reconfigure the site for better traffic management, safety and logistics.

“The new facilities will set the direction for our future in New Zealand while also improving the efficiency and safety of our day-to-day operations,” says Dulux New Zealand General Manager Patrick Jones.

“We’ve enjoyed great support from our staff, customers and the local community so we’re thrilled to be improving our facilities and making a long term commitment to New Zealand manufacturing.

“The new plant will ensure that Dulux continues to be an innovative and leading supplier of water-based paint products to the New Zealand market. Key parts of our operation will also be repositioned so all our processes are better integrated to improve the working environment for our people and make our whole operation more efficient,” says Mr Jones.

Construction began in October and will continue in stages until mid-2011.



## NEW OFFICE BLOCK LEVERAGES HAGLEY PARK VIEW. Situated on previously industrial land the Park View location adjacent to Hagley Park begged for a new purpose. Graham McDermid from Architects Plus Ltd was the man to deliver the vision.

The nature of the site lent itself to 360 degree architecture with views of the Port Hills to the south, Hagley Park to the north, the Catholic Basilica to the east and the Southern Alps to the west. Significant areas of ‘clever’ glass were used to maximise the views and adhere to green building principles whilst minimising solar gain. A semi-reflective coloured glass and shiny alucobond was used to reflect the trees in Hagley park, allowing the building to blend into the environment.

In addition to maximising rentable floor space a key element of Graham’s brief was to apply green building principles. Dulux paints were chosen for their low VOC ratings says Graham. Undercover bike racks were also integrated into the design to encourage alternative modes of transport.

The colour palette for naming rights tenant White Fox & Jones, was compiled by interior designer Jude Meyer. Influenced by the proximity of Hagley Park, Jude specified splashes of greens to bring the outside in and extra orange features were added to “create unique spaces and inject some life” into the interior areas of the building.

<b>Architect</b>	Architects Plus Ltd	<b>Interior Colours</b>	Dulux Sandfly Point Quarter Dulux Haast Dulux Haast Half Dulux Haast Double Dulux Opiki Dulux Pukekohe Dulux Matauri Bay Double Dulux Islington Bay Dulux Miramar Dulux Rangataua Dulux White Island Double Dulux Mouse Point
<b>Interior Designer</b>	Jude Meyer		
<b>Construction</b>	CBC Construction		
<b>Painting Contractor</b>	Jeff Dermotts Painting and Decorating		
<b>Dulux</b>	Karl Battersby National Project Services Manager 021 926 204		
<b>Products</b>	Dulux Wash & Wear 101 Dulux Aquanamel Dulux Professional Acrylic Sealer Undercoat		

## ■ DULUX FEATURE COLOUR



Dulux Matapouri  
A sandy ochre



**REJUVENATED RESORT ON WHITIANGA WATERFRONT.** Oceans Resort in Whitianga was transformed during the off-season, when its cedar weatherboards received a rejuvenating makeover courtesy of Cabot's wood stain.

This popular 65 unit complex encompassing a motel and apartments is located just 100 metres from Buffalo Beach, so it's constantly exposed to sun and saltwater spray.

Steve Keenan from Matassa Coatings worked closely with the owners and Dulux to choose the right timber stain treatment for the cedar weatherboards.

"The owners wanted to use a wood stain that would show off the timber's natural grain best, restore the cedar weatherboards and strengthen the timbers natural defences. They were also concerned about minimising the impact on the environment."

Cabot's Weatherboard and Fence stain in Dark Cedar was chosen for its semi-transparent nature and rich colour. Nearly 1000 litres was used to complete the project.

In accordance with Cabot's specification, the weatherboards were prepared for staining by lightly wire brushing them to provide a clean surface. Two coats of the stain were applied to give the right depth of colour, as well as protection from the elements.

"The stain has given the buildings an uplifting but natural looking result, highlighting the beauty of the cedar grain," said Steve Keenan. To retain the protective and rich nature of the stain the resort's owners have committed to a five year maintenance programme.



**Contractor** Matassa Coatings 2005 Ltd

**Dulux** Kieran Nally  
Architectural –  
Commercial Manager  
Northern Region  
021 926 216

Aroha McLean  
Dulux Trade Centre Manager  
Tauranga  
07 578 3029

**Products** Cabot's Weatherboard  
and Fence Stain

**Exterior colour** Cabot's Dark Cedar



### DULUX FEATURE COLOUR

Dulux Glenbrook

Dulux Haast Double

Dulux Matapouri

## COMPETITION

In this issue we are giving away a **\$200 gardening voucher** to one lucky reader. Get inspired and plant some colour this spring.

Just find the answer to the following question in this issue of Dulux Surface, and email it to [surface@dulux.co.nz](mailto:surface@dulux.co.nz) to go in the draw to win. Please enter "competition" in the subject line. Entries close 4 December 2009.

**Q: What is the website address for 2010 Colour Awards expressions of interest?**

Congratulations to last issue's winners of the 8GB iPod nano, Leigh Marshall of Leigh Marshall Architect.



**CONTACT US** Comments or feedback?  
Email us at [surface@dulux.co.nz](mailto:surface@dulux.co.nz)  
We'd love to hear from you.



<< **DULUX  
FEATURE COLOUR**



**NEW COLOURS FOR CABOT'S WEATHERBOARD AND FENCE STAIN.** Inspired by the natural beauty that is New Zealand, Cabot's is introducing eighteen new colours to its Weatherboard and Fence Stain Water Based range this season.

The new colours range from the cool whites of Kahikatea and Toitoe through to the rustic tones of Pirongia and as deep and rich as Maungakiekie.

The lighter shades have been developed to give a calm, contemporary feel to wooden substrates and the darker shades to create rich contrasts with the exterior environment.

Soon to be released is a box collection of beautiful, natural Cabot's woodcare colours. The colour selector tool, targeted to the Architectural and Specifier market, will include the eighteen new woodcare colours as well as six of the most popular existing colours from Weatherboard and Fence Stain range.

Cabot's stains compliment the inherent character of the wood and allows the natural beauty to shine through.

Architects and Specifiers can now order Cabot's Weatherboard and Fence Stain Water Based samples on cedar. To order simply visit [www.cabots.co.nz](http://www.cabots.co.nz) and click the Architects and Specifiers quicklink, located along the bottom of the page.



Klein Bottle House  
Winner 2008 Dulux Colour Award – Residential Exterior

**MCBRIDE CHARLES RYAN LECTURE SERIES.** Dulux sponsored a lecture series with guest speakers Rob McBride and Debbie-Lyn Ryan. Rob and Debbie-Lyn are directors of Melbourne based architectural practice McBride, Charles Ryan. They took us through an inspirational tour of many of their award winning projects and what makes them successful.

MCR are a young Melbourne based architectural practice renown for experimentation and unique designs. As recipients of a string of awards, including the 2008 Dulux Colour Award – Residential Exterior & the 2005 Dulux Colour Awards Grand Prix, their ability to translate ideas into reality has been widely recognised.

The CPD lecture series which went to Auckland, Wellington and Christchurch was a resounding success with venues filled to capacity. To view segments from Rob and Debbie-Lyn's presentation visit [www.eboss.co.nz](http://www.eboss.co.nz). New segments from the lecture series will be available each month.



For further information on Dulux colours and products, please visit [www.dulux.co.nz](http://www.dulux.co.nz), call Dulux Customer Service on 0800 800 424, or talk to your local Dulux representative.



Dulux is proud to be a member of the New Zealand Green Building Council and is dedicated to developing environmentally sustainable products.



sustainable  
BUSINESS NETWORK  
MEMBER

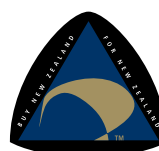
Sustainable Business of the year 2007 (Central Region)



To find a Registered Master Painter in your area visit [www.masterpainters.co.nz](http://www.masterpainters.co.nz)



An extensive range of Dulux products have the tick of approval from Environmental Choice.



Dulux paint has been made in New Zealand for our unique conditions since 1939.



ISO 9001  
ISO 14001



Colours shown are as close as possible to actual paint colours. Please note, due to the limitations of the printing process, printed colour and images may not always represent the true colour. Always confirm your choice with Dulux Sample Pots. Dulux, Worth doing, worth Dulux are registered trademarks. Dulux NZ, 150 HUTT PARK ROAD, LOWER HUTT, New Zealand.

Dulux Surface is printed with vegetable inks on recycled stock that is sourced from sustainable plantation wood and is Elemental Chlorine Free (ECF).